



SECTION FACING EAST

Scattered MZN float
all around drill

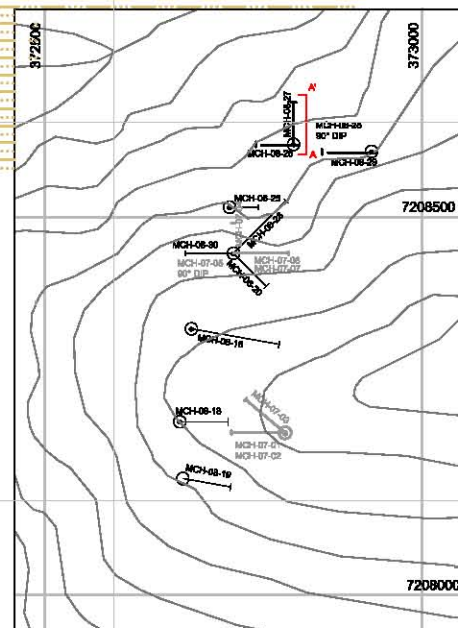
MCH-08-27 (-45°)

MCH-08-028 (-90°)

1350 m

1300 m

1250 m



--- Inferred bedding attitude

Zn %, Pb %, Ag (g/t)
Interval (m)

Weighted average
grade and interval width

- $\geq 8.00\%$ Zn + Pb
- $\geq 4.00 < 8.00\%$ Zn + Pb
- $\geq 2.00 < 4.00\%$ Zn + Pb
- $\geq 1.00 < 2.00\%$ Zn + Pb
- Weakly elevated iron ($>1\%$)



Bouvette Formation
dolostone



Quartet (Gillespie Lake?)
Group siltstone



Breccia



Sanded dolostone



Mineralized talus



Overburden



Crackle breccia

ZINCCORP RESOURCES INC.

FIGURE 32
ARCHER, CATHRO & ASSOCIATES (1981) LIMITED
MCH-08-27 & -28 SECTION
MICHELLE PROPERTY

Scale 1:1000

0 m

50 m

DRAWN / REVISED BY: D. GREGORY

PROJECT: MICHELLE

FILE:..PROJECTS/2008/Michelle/F_32

DATE: MARCH 2009

cc26899: 1.5, 0.9, 9 Soil sample location (sample
number, Zn %, Pb %, Ag g/t)